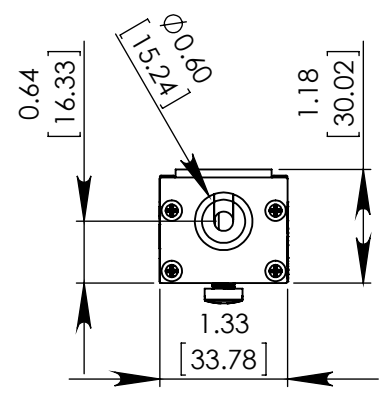
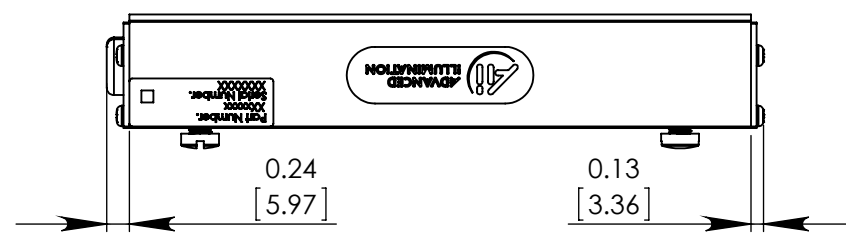
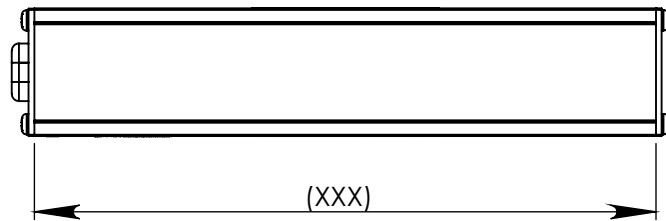


REVISIONS			
REV.	DESCRIPTION	DATE	DCN NO

EL193 LENGTH CHART	
PART NUMBER	LENGTH (XXX)
EL19302	2.475"/62.9mm
EL19304	4.475"/113.7mm
EL19306	6.475"/164.5mm
EL19308	8.475"/215.3mm
EL19310	10.475"/266.1mm
EL19312	12.475"/316.9mm
EL19314	14.475"/367.7mm
EL19316	16.475"/418.5mm
EL19318	18.475"/469.3mm
EL19320	20.475"/520.1mm
EL19322	22.475"/570.9mm
EL19324	24.475"/621.7mm
EL19326	26.475"/672.5mm
EL19328	28.475"/723.3mm
EL19330	30.475"/774.1mm
EL19332	32.475"/824.9mm
EL19334	34.475"/875.7mm
EL19336	36.475"/926.5mm
EL19338	38.475"/977.3mm
EL19340	40.475"/1028.1mm
EL19342	42.475"/1078.9mm
EL19344	44.475"/1129.7mm
EL19346	46.475"/1180.5mm
EL19348	48.475"/1231.3mm
EL19350	50.475"/1282.1mm
EL19352	52.475"/1332.9mm
EL19354	54.475"/1383.7mm
EL19356	56.475"/1434.5mm
EL19358	58.475"/1485.3mm
EL19360	60.475"/1536.1mm
EL19362	62.475"/1586.9mm
EL19364	64.475"/1637.7mm
EL19366	66.475"/1688.5mm
EL19668	68.475"/1739.3mm
EL19370	70.475"/1790.1mm
EL19372	72.475"/1840.9mm
EL19374	74.475"/1891.7mm
EL19376	76.475"/1942.5mm
EL19378	78.475"/1993.3mm
EL19380	80.475"/2044.1mm



PROPRIETARY AND CONFIDENTIAL
 THESE DRAWINGS AND SPECIFICATIONS ARE THE EXCLUSIVE PROPERTIES OF ADVANCED ILLUMINATION INCORPORATED ISSUED IN STRICT CONFIDENCE AND SHALL NOT, WITHOUT THE PRIOR WRITTEN PERMISSION OF ADVANCED ILLUMINATION INC BE REPRODUCED, COPIED OR USED FOR ANY PURPOSE WHATSOEVER EXCEPT THE MANUFACTURE OF ARTICLES FOR ADVANCED ILLUMINATION INC

		UNLESS OTHERWISE SPECIFIED: SURFACE SHOULD BE FREE OF SCRATCHES, BURRS, AND DENTS DIMENSIONS ARE IN: INCHES <u>TOLERANCES</u> FRACTIONAL ± 1/16 ANGULAR: MACH ± 1 BEND ± 1 TWO PLACE DECIMAL ± .010 THREE PLACE DECIMAL ± .005 MAKE FROM		DATE	NAME
			DRAWN	--	--
			CHECKED	--	--
			APPROVED	--	--
			MATERIAL		
			FINISH		
NEXT ASSY	USED ON				
APPLICATION					

ADVANCED ILLUMINATION
 24 PEAVINE DRIVE, ROCHESTER, VERMONT 05767

TITLE:
DRAWING, INSTALLATION, EL193

SIZE DWG. NO. REV
A -- --

SCALE: NTS C CODE: SHEET 1 OF 1