

### Product Highlights

- The SL223 is characterized as a MicroBrite™ Spot/Coaxial Light and is designed primarily to replace fiber optic light sources in coaxial lensing applications.
- Optional couplers are available for use with Dolan-Jenner, Fostec, and Moritex fiber bundles.



### General Specifications

| Electrical Specifications    | Color   | 24V Current | All Other Controls |
|------------------------------|---|-------------|--------------------|
|                              | 365, 375, 385, 395, 405   | N/A         | 0.25 A Max         |
|                              | 625   | N/A         | 0.45 A Max         |
|                              | WHI, 455, 470, 505, 530, 590, 660   | N/A         | 0.30 A Max         |
|                              | 730, 850, 940   | N/A         | 0.70 A Max         |
| Normal Operating Temperature | 0 - 60°C  |             |                    |
| Weight                       | 13.6g (0.48oz)  |             |                    |
| Standard Cable Information   | 2 m long -0/+150 mm (80" -0/+6") - 105°C rated PVC jacket, foil shield with drain.  |             |                    |
| Photobiological Risk Factor  | <p>Exempt Applicable Wavelengths: 850, 940</p> <p>Group 1 (Low-Risk) Applicable Wavelengths: 455, 470, 505, 530, 590, 625, 660, 730, WHI</p> <p>Group 2 (Moderate-Risk) Applicable Wavelengths: 365, 375, 385, 395, 405</p> |             |                    |
| Compliance                   | CE, RoHS, IEC 62471   |             |                    |
| IP Rating                    | IP65  |             |                    |

Lumen Maintenance

L70 = 50,000 Hours

## Part Number Key

| Model                                  | Mounting Options | —  | Peak Wavelength  | Connector/Control | — | Alternative Connector |
|--|------------------|--|------------------|-------------------|---|-----------------------|
| SL223                                  | X                | —  | XXX              | XX                | — | XXX                   |
| SL223                                  | S<br>(Standard)  | —  | 365 (UV)         | C1                | — | M8 <sup>1</sup>       |
|  |                  |  | 375 (UV)         | C5                |   | M12 <sup>1</sup>      |
|  | B<br>(Barrel)    |  | 385 (UV)         | IC                |   |                       |
|  |                  |  | 395 (UV)         | I3                |   |                       |
|  |                  |  | 405 (violet)     | I3S               |   |                       |
|  |                  |  | 455 (royal blue) |                   |   |                       |
|  |                  |  | 470 (blue)       |                   |   |                       |
|  |                  |  | 505 (cyan)       |                   |   |                       |
|  |                  |  | 530 (green)      |                   |   |                       |
|  |                  |  | 590 (amber)      |                   |   |                       |
|  |                  |  | 625 (red orange) |                   |   |                       |
|  |                  |  | 660 (red)        |                   |   |                       |
|  |                  |  | 730 (IR)         |                   |   |                       |
|  |                  |  | 850 (IR)         |                   |   |                       |
|  |                  |  | 940 (IR)         |                   |   |                       |
|  |                  |  | WHI (white)      |                   |   |                       |
| EX:<br>SL223B-530C1<br>SL223-WHII3-M12 |                  | <sup>1</sup> Available with IC, I3, and I3S options only |                  |                   |   |                       |

See website product page for in-stock product numbers.

Shipping:  
 Stock Products: within three days  
 Build-to-Order Products: within one to three weeks

## Change Notice

PCN No: 157

Date Issued: June 28, 2021

Notice Type: Product Change

Product Type: SL223

## Change Notification Summary

In an effort to improve our products, Advanced illumination (Ai) will be updating the PCB, housing and strain relief

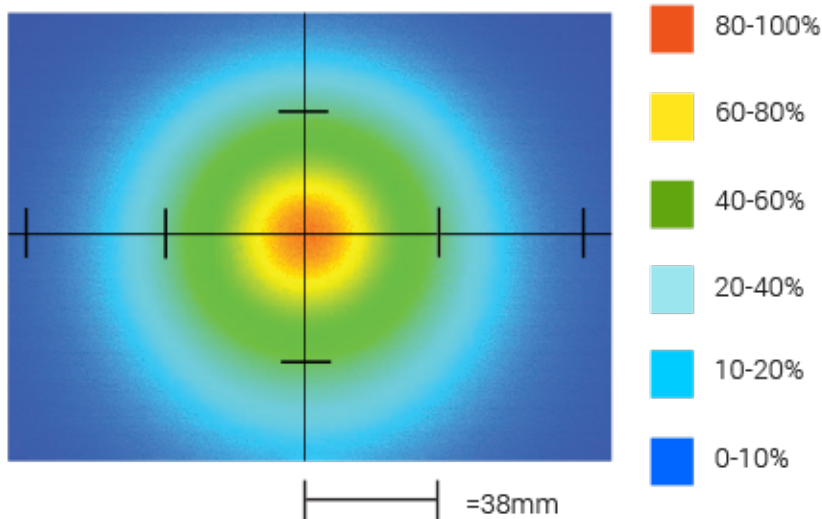
used in the SL223. This will result in a more robust and thermally efficient design; improving product longevity and durability. These changes will include an upgrade from stainless steel to a black anodized aluminum housing and the replacement of the rubber strain relief for a crimped brass cable entry sleeve. Adjustments to the PCB assembly will be made to improve thermal performance. Overall product dimensions will remain unchanged.

Please contact your Ai Sales Representative if you have any questions.

PCN 157 SL223

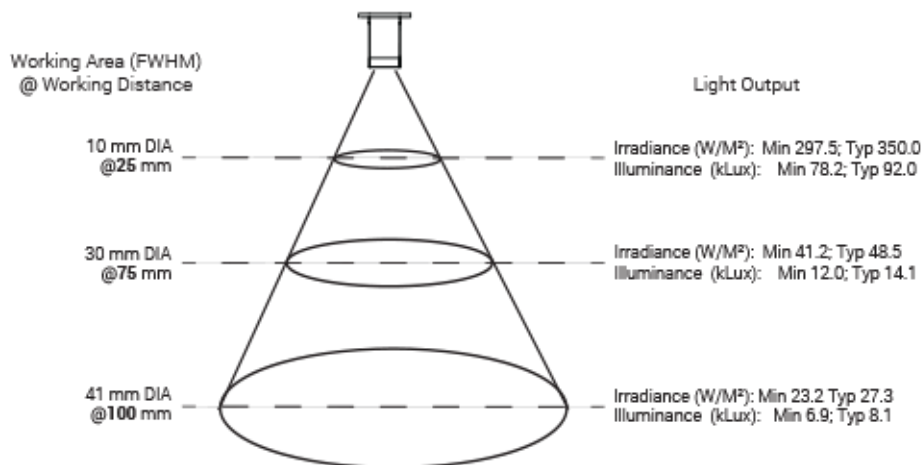
## Optical Specs

### Intensity Distribution



Optical measurement taken using SL223-WHIIC @ 75mm

### Area of Illuminance & Intensity

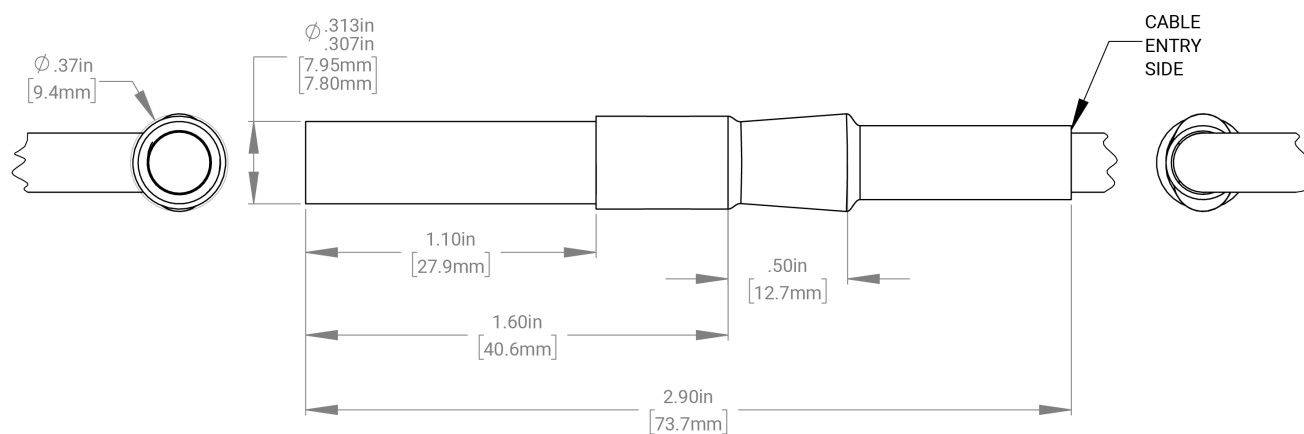


## Control Specs

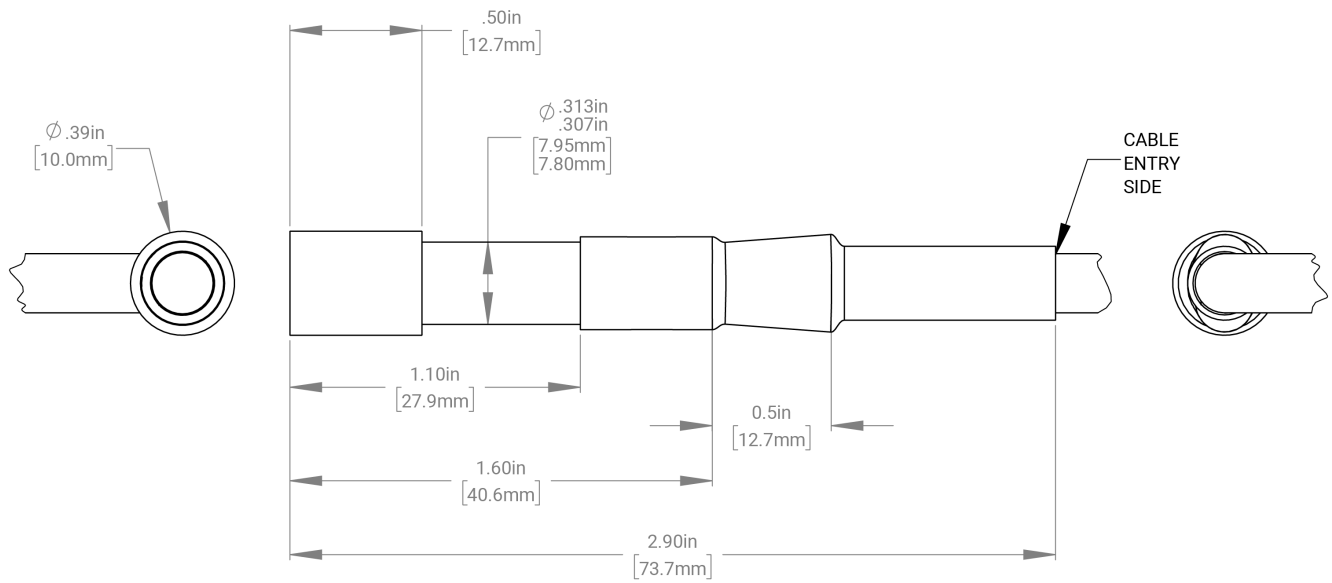
| C1 Connector                                       | C5 Connector  | ICS 2 (IC)  | ICS 3 (I3)  | ICS 3S (I3S)  |
|--|---|---|---|---|
| For use with:<br><b>DCS Series<br/>Controllers</b> | For use with:<br><b>Pulsar 320 Strobe<br/>Controller.</b> | Continuous in-line<br>controller<br><br><i>Powered with:<br/>24V power supply</i> | Combination<br>strobe/continuous<br>in-line controller<br><br><i>Powered with:<br/>24V power supply</i> | Default-OFF<br>strobe/continuous<br>in-line controller<br><br><i>Powered with:<br/>24V power supply</i> |

## Mechanical Specs

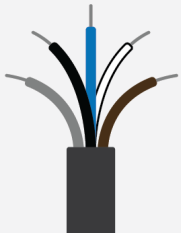
## SL223 MODEL S



## SL223 MODEL B

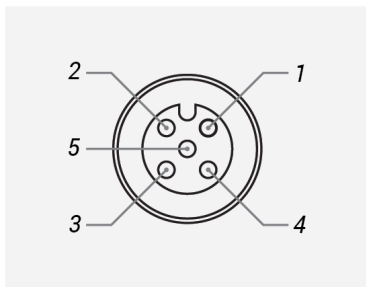


## Standard Flying Lead Functions for IC, I3 and I3S Control Options

|  | COLOR | IC FUNCTIONS          | I3/I3S FUNCTIONS        |
|---|-------|-----------------------|-------------------------|
|   | BROWN | 24 V DC               | 24 V DC                 |
|   | WHITE | 0-10 V ANALOG DIMMING | RESERVED                |
|   | BLUE  | DC GND                | DC GND                  |
|   | BLACK | PNP/ACTIVE LOW GATE   | PNP/ACTIVE HIGH TRIGGER |
|   | GRAY  | N/A                   | 0-10 V ANALOG DIMMING   |

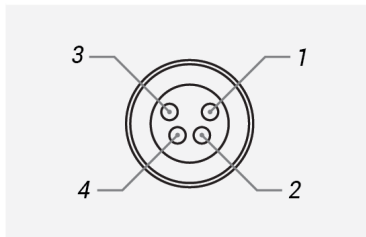
The functions listed above are applicable when this product is configured with built-in IC, I3, or I3S control, **without** the optional A-coded 5-position Male M12 or A-coded 4-position Male M8 connector.

## M12 Connector Pinout Functions for IC, I3 and I3S Control Options

|  | PIN | IC FUNCTIONS          | I3/I3S FUNCTIONS        |
|--|-----|-----------------------|-------------------------|
|  | 1   | 24 V DC               | 24 V DC                 |
|  | 2   | 0-10 V ANALOG DIMMING | RESERVED                |
|  | 3   | DC GND                | DC GND                  |
|  | 4   | PNP/ACTIVE LOW GATE   | PNP/ACTIVE HIGH TRIGGER |
|  | 5   | N/A                   | 0-10 V ANALOG DIMMING   |

The functions listed above are only applicable when this product is configured with built-in IC, I3, or I3S control, **with** an A-coded 5-position Male M12 connector.

## M8 Connector Pinout Functions for IC, I3 and I3S Control Options

|  | PIN | IC FUNCTIONS          | I3/I3S FUNCTIONS        |
|---|-----|-----------------------|-------------------------|
|   | 1   | 24 V DC               | 24 V DC                 |
|   | 2   | 0-10 V ANALOG DIMMING | 0-10 V ANALOG DIMMING   |
|   | 3   | DC GND                | DC GND                  |
|   | 4   | PNP/ACTIVE LOW GATE   | PNP/ACTIVE HIGH TRIGGER |

The functions listed above are only applicable when this product is configured with built-in IC, I3, or I3S control, **with** an A-coded 4-position Male M8 connector.

For details on operating configurations without built-in control (C1, C5, Q1, and Q4 control, when available), please refer to Advanced illumination's controller manuals.

## Warranty Information

Every Advanced illumination, Inc. (Ai) product is thoroughly inspected and tested before leaving the factory. Products are warranted to be free of defects in workmanship and materials for a period of FIVE YEARS from the original date of purchase. Should a defect develop during this period, customers may return the complete product, freight prepaid, to one of Ai's distributors or to the Ai factory. All product warranty returns require a Return Merchandise Authorization (RMA) number which is obtained from Customer Service. The RMA number must be clearly marked on the outside of the package. Ai will inspect the unit, and if a defect is found will, at our option, repair or replace the product without charge. Ai disclaims liability for any implied warranties, including implied warranties of "merchantability" and "fitness for a specific purpose." For products under warranty that have since been discontinued, Ai will make an effort to replace with equivalent parts; for circumstances that do not allow for equivalent replacement, Ai reserves the right to repair or replace these products with an updated version. Ai cannot be held responsible for the unauthorized or inappropriate use of its products. Any unauthorized repair or modifications will result in a voided warranty.

No Liability for Consequential Damages: In no event shall Ai be liable for any consequential, special, incidental, or indirect damages of any kind arising from the sale or use of the products.

## Electromagnetic Compatibility

This product was tested and complies with the regulatory requirements and limits for electromagnetic compatibility (EMC) as stated in the product specifications. These requirements and limits are designed to provide reasonable protection against harmful interference only when the product is operated in its intended industrial electromagnetic environment. To minimize the potential for electromagnetic interference or unacceptable performance degradation, install and use this product in strict accordance with the instructions in the product documentation.

## Customer Service

For information on existing orders, or to make an order adjustment, contact us Monday through Friday 8:00 am to 5:00 pm ET or send an email to [orders@advancedillumination.com](mailto:orders@advancedillumination.com).

## Company Information

### **Advanced Illumination**

440 State Garage Road, Rochester, VT 05767

Phone: 802.767.3830

Fax: 802.767.2636

Email: [info@advancedillumination.com](mailto:info@advancedillumination.com)

Web: [advancedillumination.com](http://advancedillumination.com)

© 2021 Advanced illumination Inc. All rights reserved